



INDEX

OUR COMMITMENT	01
INTRODUCTION	02
RECYCLE GYPSUM WASTE	03
WASTE REQUIREMENTS	04
PARTNER WITH US	05

Our Commitment



Christo Smith

Managing Director Walls & Ceilings

“The Gyproc Gypsum Recycling Service offers a sustainable alternative to sending gypsum waste to landfill.

To support the transition towards a circular construction industry, Gyproc Brakpan has established a gypsum recycling service that accepts pre-sorted plasterboard waste from construction sites for recycling. The recycling process is provided at no additional cost, allowing developers to divert gypsum waste from landfill while avoiding landfill disposal fees.

Gyproc’s Gypsum Recycling Service makes circular construction practical. With no recycling fee, we remove the barriers to responsible waste management — making it easier for contractors and developers to divert gypsum board waste from landfill.

As part of our Make it in Africa to Build Africa (MABA) commitment, we are scaling solutions that are practical, cost-effective, and built for local conditions.

Together, we can close the loop on gypsum board waste and build a more resilient, sustainable construction industry in Africa.”

Christo Smith
Managing Director Walls & Ceilings

Introduction

RECYCLE GYPSUM WASTE WITH GYPROC

Gypsum Waste to Landfill, Wasted Potential.

Construction & demolition waste is one of the largest waste streams generated by the built environment. The World Green Building Council estimates that Africa will be home to 1.1 billion more people by 2050, placing us on the edge of a construction boom.

The challenge:

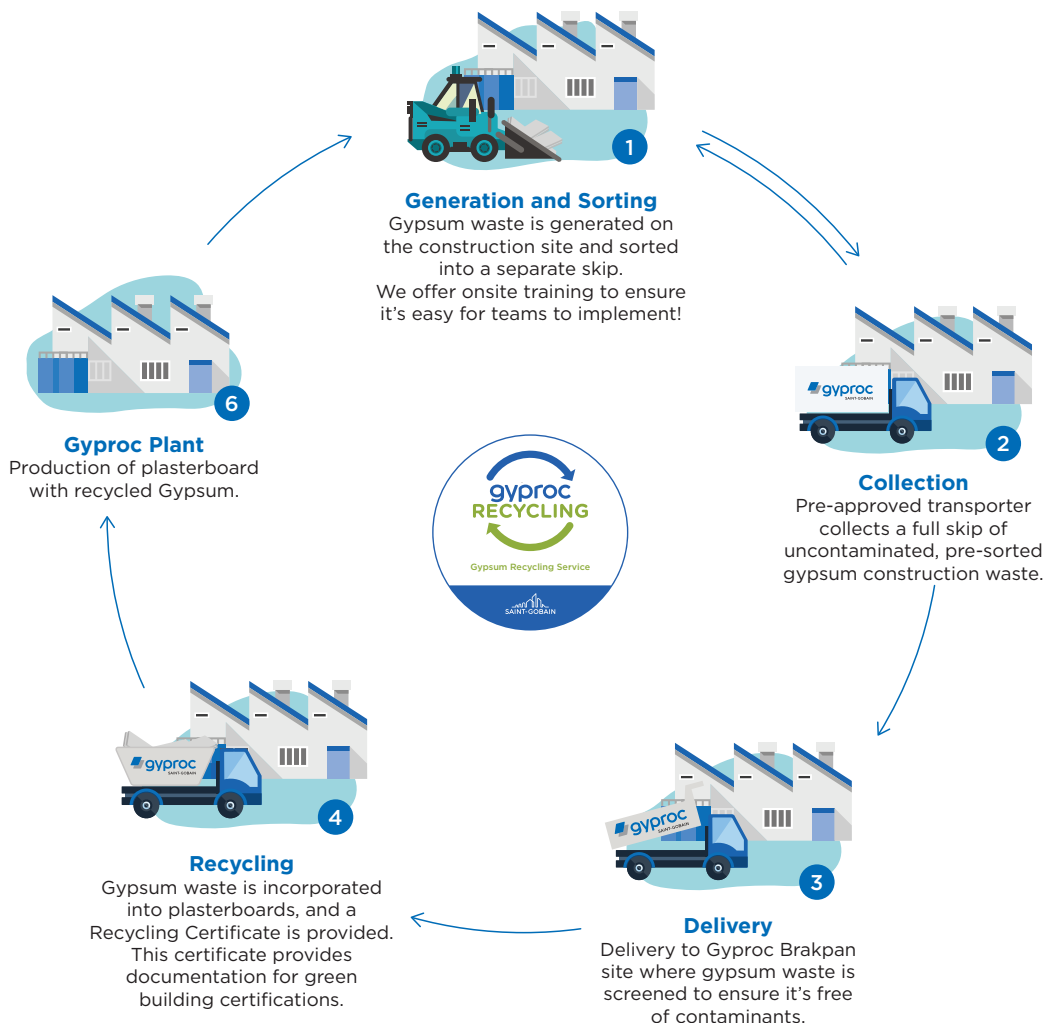
- Rapidly increasing demand for buildings.
- Increasing landfill disposal costs with limited landfill space.
- Increasing pressures from legislation to reduce waste to landfill.

Gypsum recycling provides developers, contractors, and sustainability teams with a simple way to:

- divert waste from landfill,
- reduce embodied carbon,
- support ESG reporting
- contribute toward green building certifications.

The Gyproc Gypsum Recycling Service helps turn plasterboard waste into a valuable resource by incorporating recycled gypsum back into the manufacturing process.

HOW IT WORKS





Why Recycle?



Did you know...

Gypsum is infinitely recyclable. Every gypsum board sent to landfill is a missed opportunity to turn waste into value.

Recycling gypsum waste provides a practical way to reduce landfill disposal costs while supporting sustainability objectives across the built environment.

KEY BENEFITS

- Reduced landfill costs**
 Landfill disposal of construction waste in Gauteng can range between R450 and R1,050 per ton when transport, handling, and gate fees are included. Recycling eliminates landfill disposal fees for gypsum waste.
 - Contribution to green building certifications**
 Diverting construction waste from landfill can support project scoring in GreenStar, LEED, EDGE, BREEAM, and WELL certification systems, where responsible waste management is recognised.
 - Stronger ESG reporting**
 Gyproc provides a recycling certificate confirming the tonnage of gypsum waste received and recycled, supporting sustainability disclosures and ESG reporting.
 - Demonstrating leadership ahead of legislation**
 The 2026 National Waste Management Strategy Draft targets a 100% diversion of Construction & Demolition Waste containing Gypsum by 2030 (NWMS, 2026, pp.56). The Strategy targets a 60% compliance rate by 2030, highlighting increasing pressure on developers to divert gypsum waste from landfills.
- Participating in gypsum recycling shows a clear commitment to reducing construction waste and leadership in more sustainable construction practices. The Gyproc Gypsum Recycling Service provides an opportunity to divert gypsum waste from landfill, getting ahead of legislation and avoiding increased costs and compliance administration.

Waste Requirements



The Gyproc Recycling Service accepts pre-sorted, uncontaminated gypsum waste. Material containing other construction debris, such as nails, cement, plastic wrap, or mixed rubble, will not be accepted.

Accepted materials include all gypsum-based plasterboard products, excluding moisture-resistant boards.

Material that does not meet these requirements may be rejected upon delivery, and the developer remains responsible for the appropriate disposal of the rejected waste.

CERTIFICATION BENEFITS

Diverting gypsum from landfill and demonstrating responsible waste management can support credits across several certification systems. Use the table below as a quick reference, and confirm requirements with your project assessor/consultant.

SCHEME	CREDIT /REF.	NAME	POINTS	TYPICAL REQUIREMENT (SUMMARY)
GREEN STAR V1	MAN07	Waste Management	Up to 3	It is demonstrated that more than 30% / 50% / 70% of construction waste generated during the construction of the building is diverted away from landfill
GREEN STAR INTERIORS V1	INT-MAN-5	Construction Waste Management	Up to 2	It is demonstrated that more than 70% of construction waste generated during the interior Fit-Out, was diverted away from landfill
GREEN STAR EXISTING BUILDINGS PERFORMANCE V1	EB-MAT-2	Solid Waste Management	0.5	It is demonstrated that more than 50% of construction waste generated during the performance period was diverted away from landfill
NET ZERO WASTE	NZW	Net Zero Waste Level 1 (construction) & Level 2 (operations)		Construction and Operational waste contribute to the certification achievement
GREEN STAR V2	A-2	Responsible Construction	1	A minimum of 70% of construction waste generated during the construction of the building is diverted away from landfill
LEED V4	MR	Construction and Demolition Waste Management	Up to 2	At least 50% / 75% of all construction waste from at least 3 / 4 different waste streams are diverted away from landfill
BREEAM V6	WST01	Construction Waste Management	Up to 3	Non-hazardous waste volume to stay below 13.3m ³ /100m ² (for one point), down to 3.5m ³ /100m ² (for three points)

Partner with Us



Estie van Zyl
Sustainability Manager

“The Gyproc Gypsum Recycling Service reflects our commitment to embedding circularity into core construction practices. By diverting gypsum off-cuts and demolition waste from landfill, we ensure that valuable material is recovered, recycled, and reintroduced into the manufacturing process.

This approach moves a traditionally waste-intensive activity toward a circular model, reducing environmental impact while supporting more efficient use of resources. It directly contributes to Saint-Gobain’s sustainability ambitions by lowering reliance on virgin raw materials, reducing carbon intensity, and enabling more responsible construction outcomes across the value chain.”

Estie van Zyl
Sustainability Manager

TURN GYPSUM WASTE INTO A SUSTAINABLE ADVANTAGE

Developers and contractors are invited to participate in the Gyproc Gypsum Recycling Service to be leaders in the transition toward more circular construction practices.

WHAT SETS THE SERVICE APART

- Operational efficiency and reduced landfill costs
- On-site “Toolbox” style training to ensure teams are adequately informed on waste sorting
- A Recycling Certificate for Green Certifications containing:
 - Tons of Gypsum Recycled
 - Virgin Materials Avoided
 - CO₂ Avoided

Ts & Cs

Material that does not meet the screening requirements will be rejected upon delivery, and the waste generator remains responsible for the appropriate disposal of the rejected waste.

CONTACT US

For more information on how to participate in the Gyproc Recycling Service, please contact:

- GyprocGypsumRecycling@saint-gobain.com

